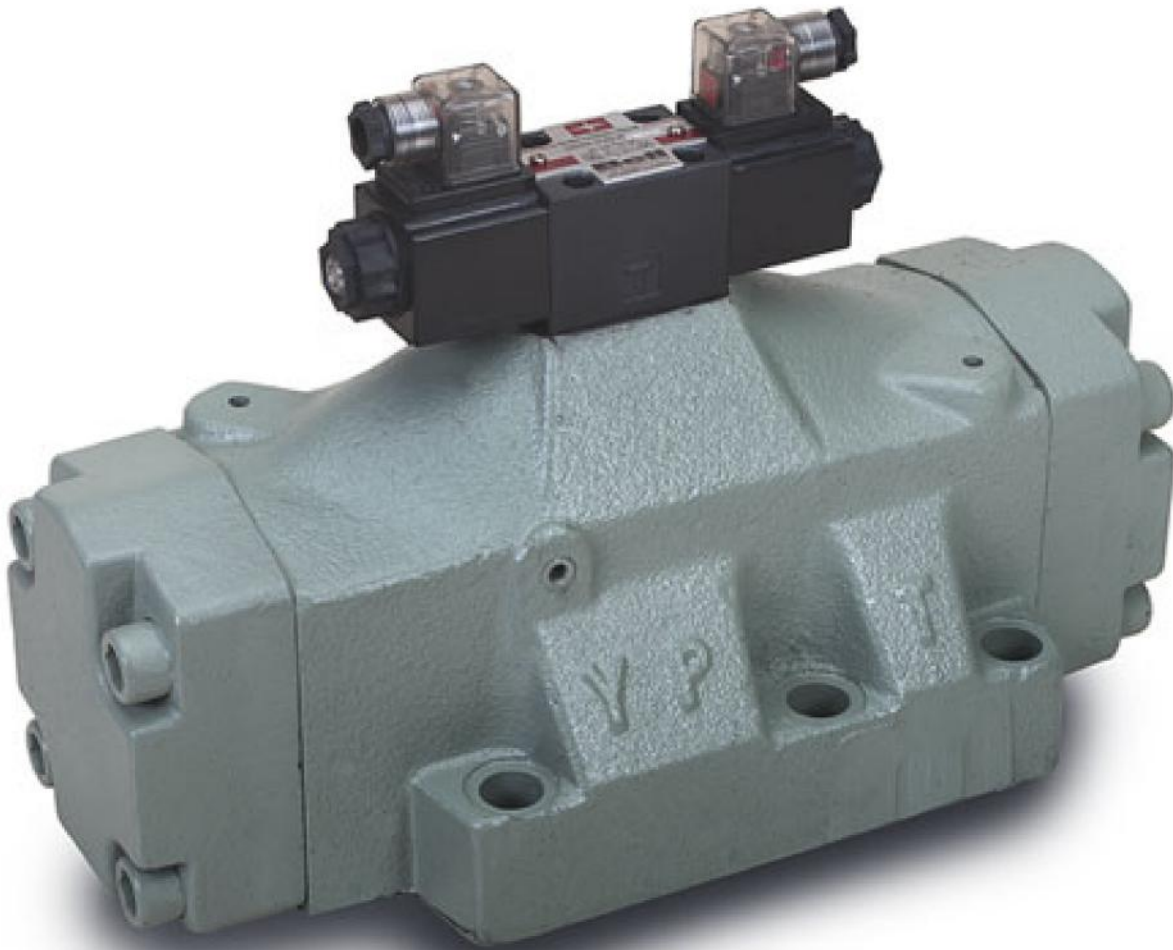


Bell Hydromatics

Solenoid Controlled Pilot Operated

DSHG-10



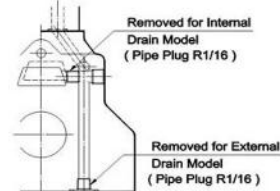
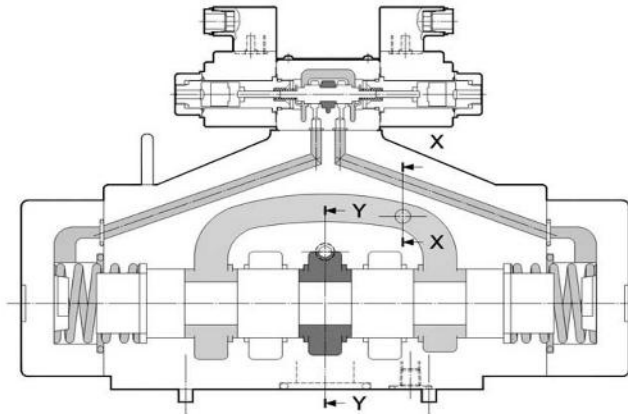
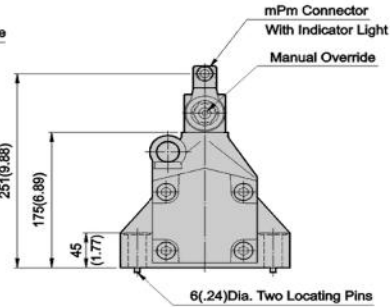
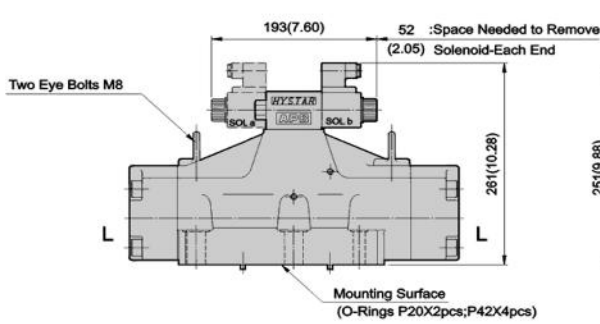
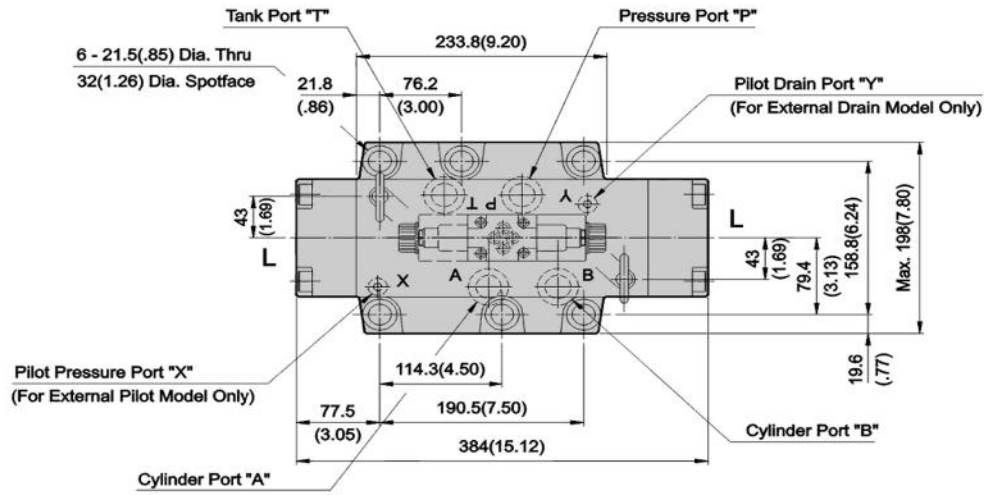
Features:

- High Flow rate upto 500 lpm (79.3 USgpm)
- Maximum Operating pressure upto 315 bar (4500 PSI)
- Long service life with average durability of 50 million spool shifts.

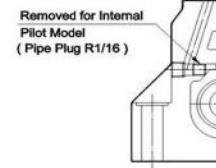
Technical Specifications

Spool Type & Graphic Symbols		DSHG – 10 (1-1/4")	
Symbols	Model Number	Rated Flow Capacity	Maximum Flow Capacity
	DSHG-10-2B2- **	570 lpm (150 USgpm)	1100 lpm (291 USgpm)
	DSHG-10-2B3- **		
	DSHG-10-2B4- **		
	DSHG-10-2N2- **		
	DSHG-10-3N3- **		
	DSHG-10-3C2- **		
	DSHG-10-3C3- **		
	DSHG-10-3C4- **		
	DSHG-10-3C40- **		
	DSHG-10-3C7- **		
	DSHG-10-3C9- **		
	DSHG-10-3C10- **		
	DSHG-10-3C11- **		
	DSHG-10-3C12- **		
	DSHG-10-3C5- **	570 lpm (150 USgpm)	950 lpm (250 USgpm)
	DSHG-10-3C6- **		
	DSHG-10-3C60- **		
Max. Operating Pressure (P.AB) (bar)		315 (4500 PSI)	
Min. Required Pilot Pressure		8 (114 PSI)	
Max. Pilot Pressure		250 (3600 PSI)	
Max. T-Line Back Pressure (T) (bar) External Drain		210 (3000 PSI)	
Max. T-Line Back Pressure (T) (bar) Internal Drain		160(2300 PSI)	
Weight (Kgs)	Single Solenoid	44.8	
	Double Solenoid	45.4	
Switching Frequency (times/min)		110	
Hydraulic Fluids		Use Hydraulic Fluids Equivalent to ISO VG32 or VG46	
Operating Temperature Range (°C)		-15 ~ +70 (+5 ~ +160 °F)	
Operating Viscosity (cSt)		15 ~ 400 (80 ~ 1800 SSU)	
Filtration		25 Microns Absolute or Finer	

Dimensions



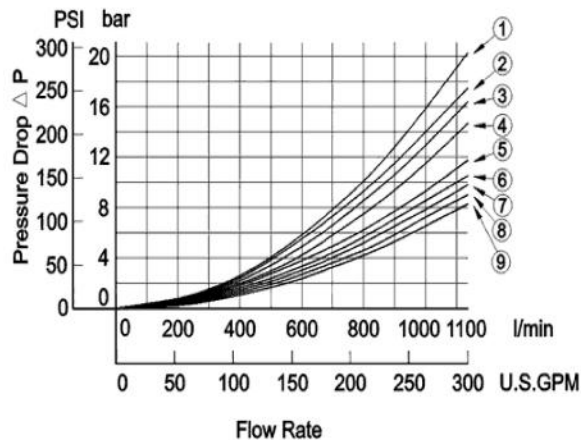
Section X-X



Section Y-Y

Attachment Name	Description	Tightening Torque	Code
Soc. Hd. Cap Screw	M20X75LgX6pcs	473-585 Nm	30
Soc. Hd. Cap Screw	3/4-10UNCX3*Lg X6pcs	4106-5078 in.lbs	3090

Performance



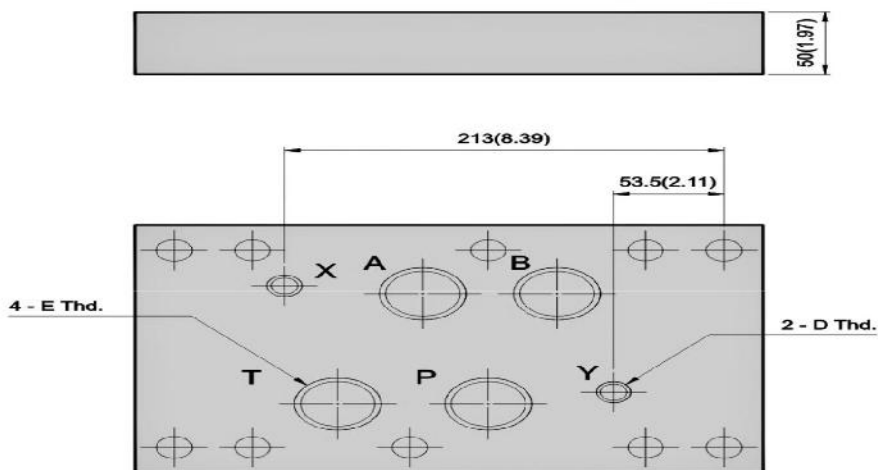
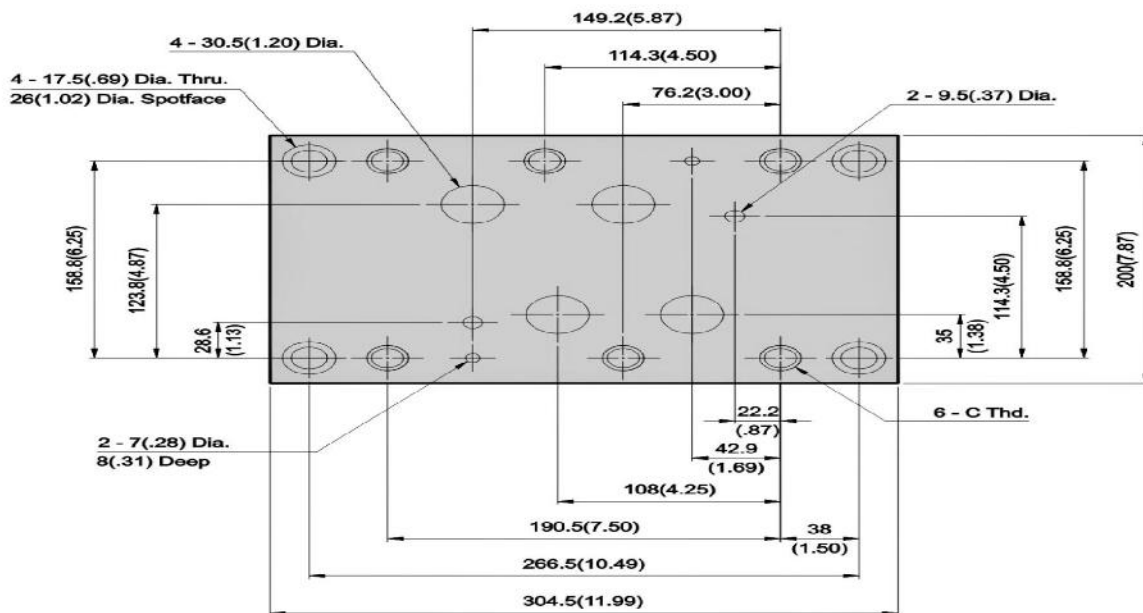
Series	Spool Type	Pressure Drop Curve Number				
		P→A	B→T	P→B	A→T	P→T
DSHG-10 DSHG-10-S	3C2	9(8)	6(3)	9(8)	8(4)	—
	3C3	7	6	7	7	5
	3C4	9(8)	6(5)	9(8)	6(6)	—
	3C40	9	6	9	8	—
	3C5	9	6	8	6	1
	3C6	5	3	5	4	2
	3C60	8(8)	5(4)	8(8)	5(4)	3(2)
	3C7	7	6	7	7	—
	3C9	7	6	7	8	—
	3C10	9	5	9	8	—
	3C11	9	6	8	7	—
	3C12	9	7	9	6	—

Graphs based on fluid viscosity of 35 cSt (162 SSU).
Notes : () curve No. is for shock-less type.

Ordering Code

DSHG	3C2	N	10	D1	36	*P*D
Series No.	Spool Type	Electrical Conduit Type	Valve Size	Coil Voltage	Design No.	Pilot and Drain Connection
DSHG	Spring centered 3 Position (3C94, 3C60, 3C6, 3C3 etc.)	N: DIN connector with light.	10 :- 1- 1/4"(NFPA-D10)	D1: DC12V D2: DC24V	36: with DIN 912 bolts	*P -> Pilot Plug (1/16, 1/8, 1/4) *D -> Drain Plug (1/16, 1/8, 1/4)
	Spring Offset 2 Position(2B2, 2B3, 2B8, 2B29 etc.)			D3: DC36V D4: DC48V		1P1D: Internal Pilot, Internal Drain
	Spring Detented 2 Position(2D2, 2D3 etc.)			D5: DC60V D6: DC72V		1P2D: Internal Pilot, External Drain
	For complete list see Spool Types tab below			D14.5: DC14.5v D28: DC28V		2P1D: External Pilot, Internal Drain 2P2D: External Pilot, External Drain

Sub Plate



CODE	C Thd.	D Thd.	E Thd.
M10-10-**-30	M20XP2.5	PT1/4	PT1-1/4
M10-10-**-3090	3/4-10UNC	NPT1/4	NPT1-1/4